



Batemans Row, London, EC2A

BUTLER & STAG





**Boasting a wonderful corner aspect and set on the second floor of a popular modern development in central Shoreditch with lift access, is this well presented two bedroom apartment spanning close to 1,050 sq. ft. Presented in immaculate decorative order and enjoying a contemporary finish throughout. Accommodation comprises of a large living room with dual aspects, kitchen, two large double bedrooms a smart fully tiled bathroom.**



- Second Floor
- Two Double Bedrooms
- Duel Aspect Living Room
- Close to Surrounding Transport
- Available 06/08
- Central Shoreditch Location
- Over 1000 Sq Ft
- City Living
- Bohemian Lifestyle
- Furnished

Boasting a wonderful corner aspect and set on the second floor of a popular modern development in central Shoreditch with lift access, is this well presented two bedroom apartment spanning close to 1,050 sq. ft. Presented in immaculate decorative order and enjoying a contemporary finish throughout. Accommodation comprises of a large living room with dual aspects, kitchen, two large double bedrooms a smart fully tiled bathroom.

Available for the 6th of August this is true city living amongst one of the vibrant areas of London, a true bohemian life.



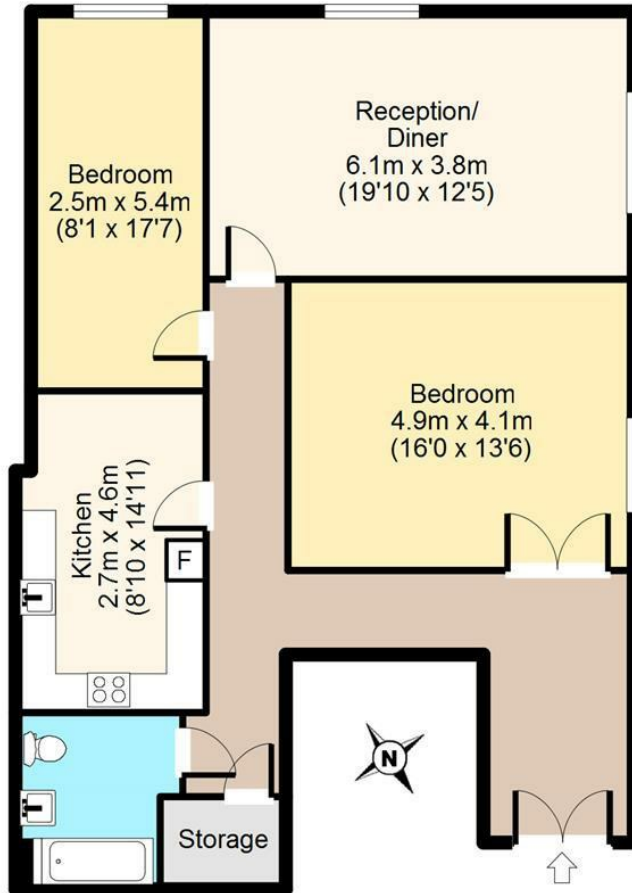




# Batesmans Row, EC2A

## Second Floor

Approx. 97 sq. meters (1040 sq. feet)



Total area: approx. 97 sq. meters (1040 sq. feet)

For illustration purposes only - not to scale

# BUTLER & STAG

☎ 020 8102 1236

🏠 508 Roman Road, Bow, London, E3 5LU

✉ bow@butlerandstag.com

[www.butlerandstag.uk](http://www.butlerandstag.uk)

IMPORTANT NOTICE - These particulars have been prepared in good faith and they are not intended to constitute part of an offer or contract. We have not performed a structural survey on this property and the services, appliances and specific fittings have not been tested. All photographs, measurements, floor plans and distances referred to are given as a guide and should not be relied upon.